



P.T.O.

CH.NH/1

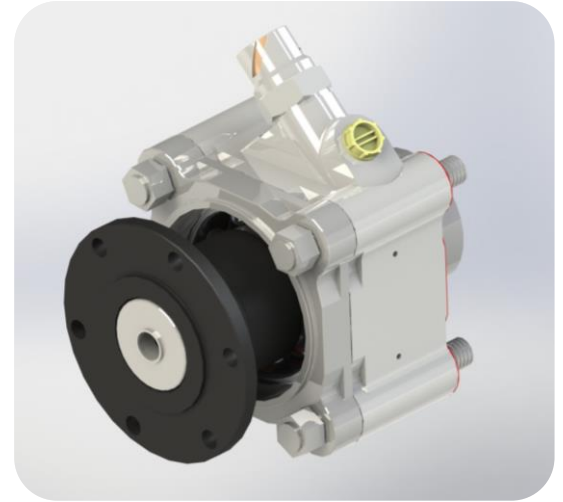
THE POWER TAKE OFF SYSTEMS

FOR LIGHT AND HEAVY DUTY TRANSMISSIONS

CLUTCH – DEPENDENT PTOs:

CLUTCH-DEPENDENT PTOs OPERATE AS SOON AS THE ENGINE RUNS AND THE VEHICLE CLUTCH IS ENGAGED. TYPICAL APPLICATIONS ARE:

- Dry-bulk tank trucks and road tankers
- Fire appliances
- Mobile cranes
- Tippers



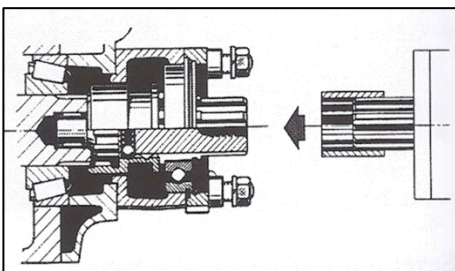
Technical specifications:

Prod.No./ Spec.	Transmission type	Speed factor*	Permissible torque
CHP3 050 001	16S-150,16S-151,16S-220, 16S-221,16S-181	0.77 - 0.91 (TD) 0.91 -1.09 (TO)	1000 N.m
	S6-90	0.47	750 N.m
Oil capacity	0.2 lit		
Oil Grade	Acc.to ZF/TE-ML02		
Operating mode	Continuous		
Engagement	Pneumatically operated dog clutch		
Output rotates	counter-enginewise		
Weight	~5 kg		

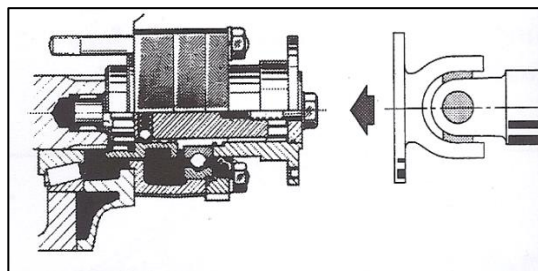
* Output speed=n engine x factor

Installation Mode/types:

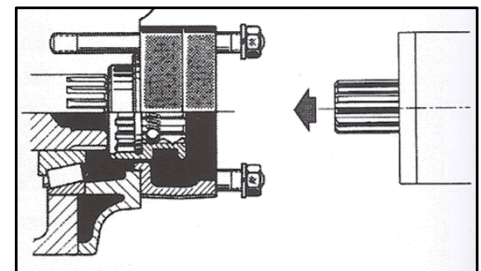
Version A



Version B



Version C



Central office:
No.172, Dastgerdi (Zafar) st.
TEHRAN - IRAN
P.O.Box:15815- 1764
Tel : +98 21 22276773 - 74
Fax: +98 21 22276710

Factory :
West industrial Zone
TABRIZ - IRAN
P.O.Box : 51385 - 4487
Tel : +98 41 34459081 - 86
Fax: +98 41 34452666

Website:
WWW.Charkheshgar.com
E-mail :
info@ charkheshgar.com



ISO/TS 16949 :2009 Approved